

Connect WinCC 8.0 via OSM+ Driver To S7-1200 or S7-1500 PLC with Firmware 4.0 or higher

This manual describes the steps to take to setup communication between S7

Install SCADA Export Tool

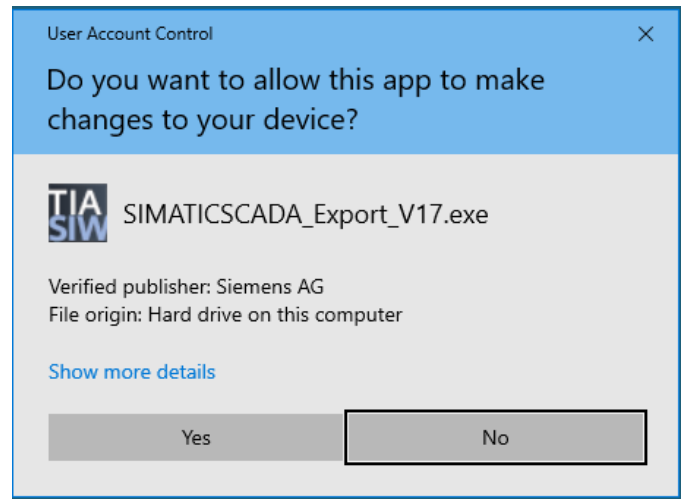
The scada export tool allows you to export connection data (certificate and - if wanted - tags). Install this tool before proceeding to the next part of the manual.

<https://support.industry.siemens.com/cs/document/109748955/simatic-scada-export-for-tia-portal?dti=0&lc=en-DE>

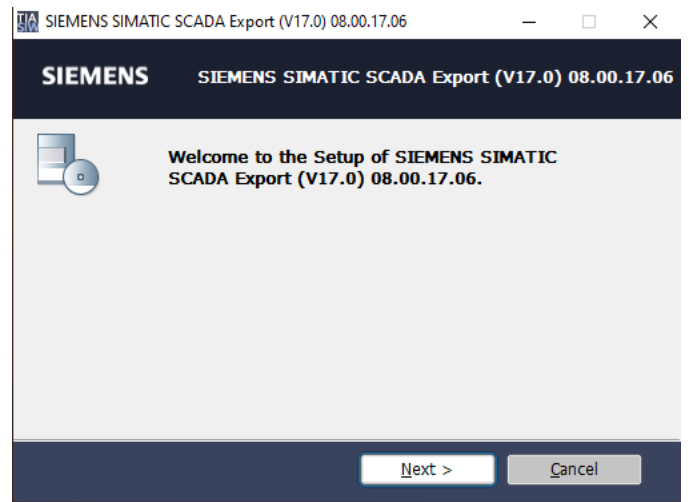
Download the appropriate version for your Tia Portal installation and install the tool.

Note! It's required the have Tia Portal installed to use this manual.

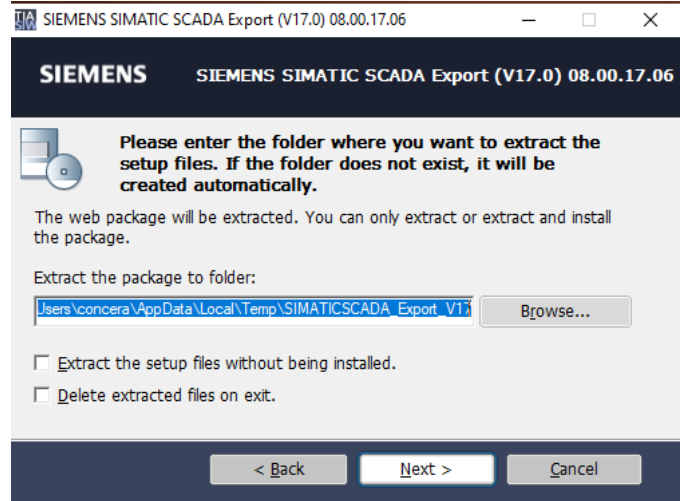
Run the installer matching you Tia Portal version.



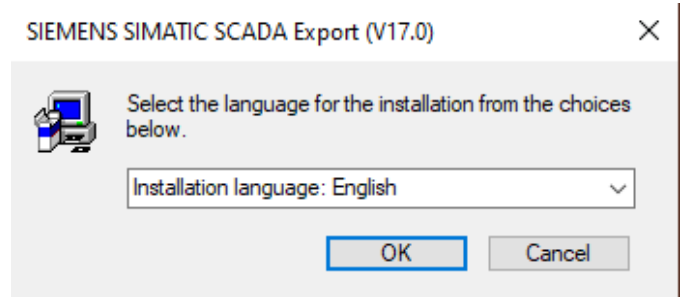
Just click Next



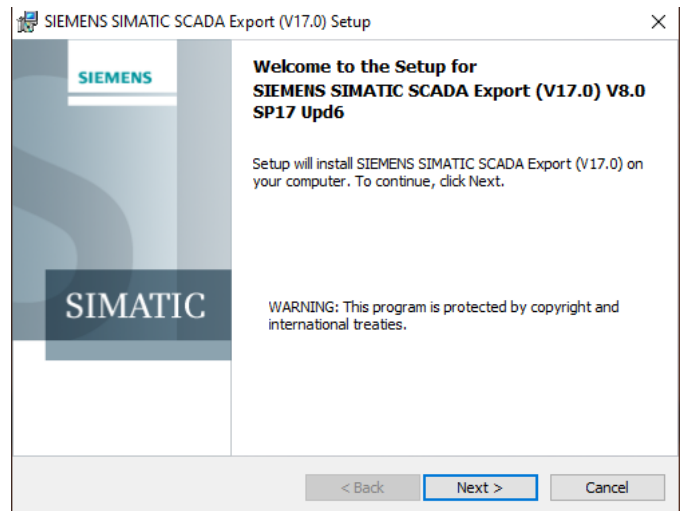
Keep all settings default and click Next



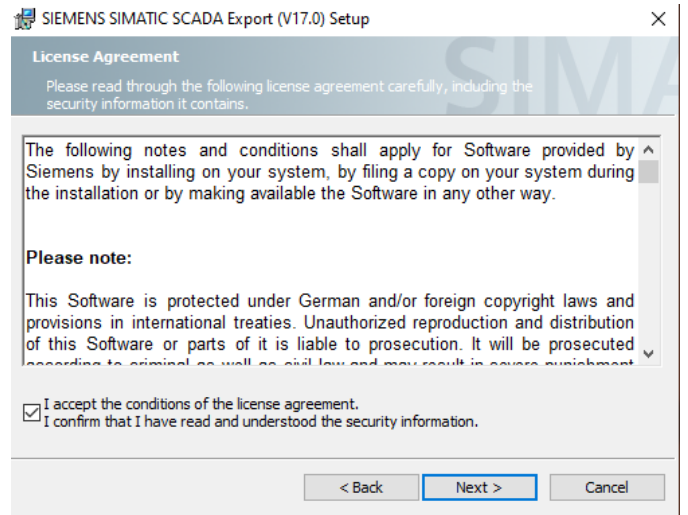
Select the desired language



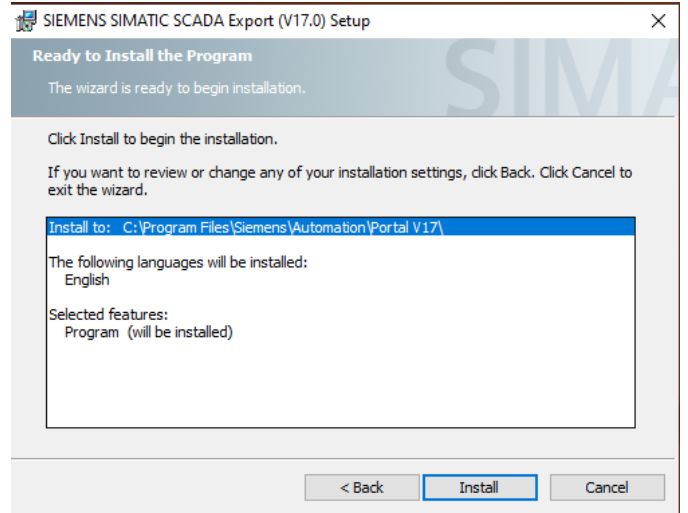
Just click Next



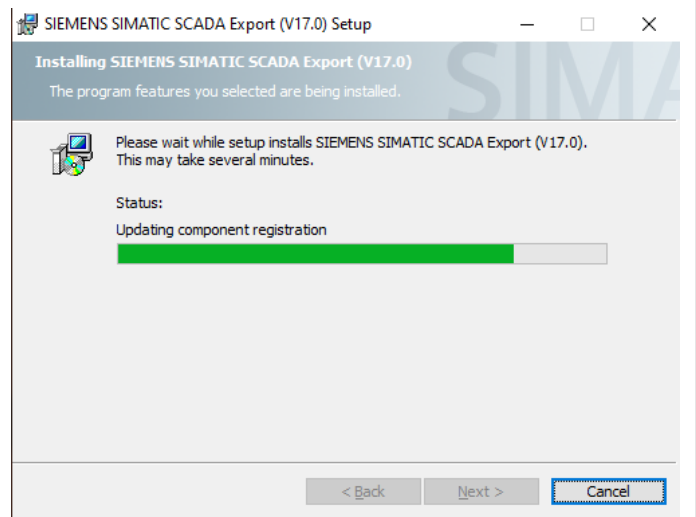
Confirm the License agreement and click Next



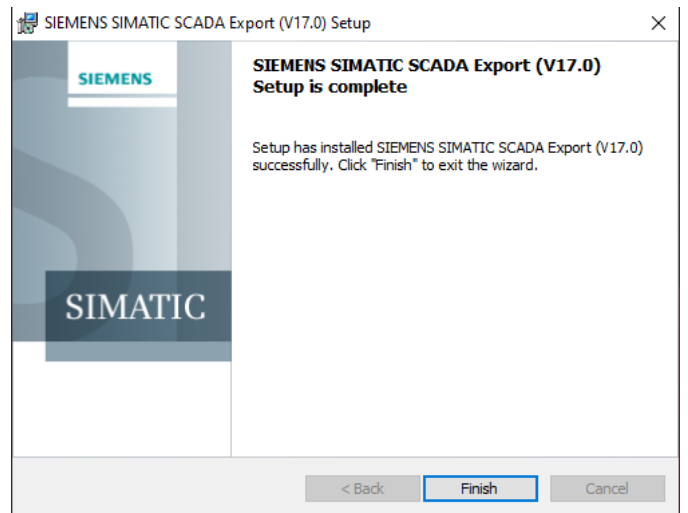
Confirm the installation setting summary.



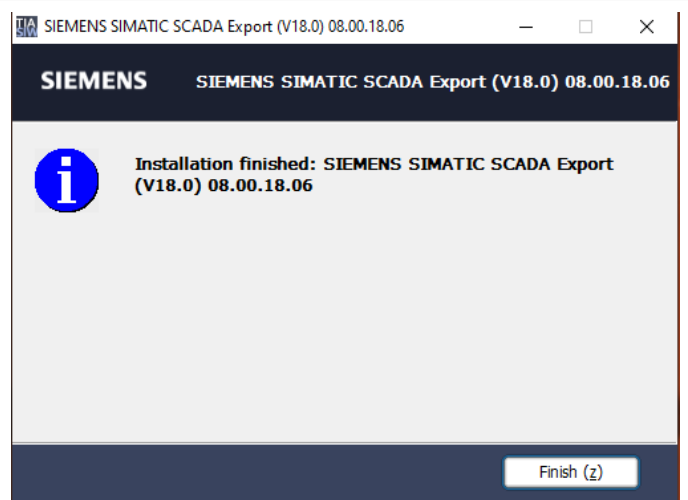
Wait for the application to install



Finish the installation



Somehow Siemens requires another finish confirmation.



Export PLC connection data for WinCC

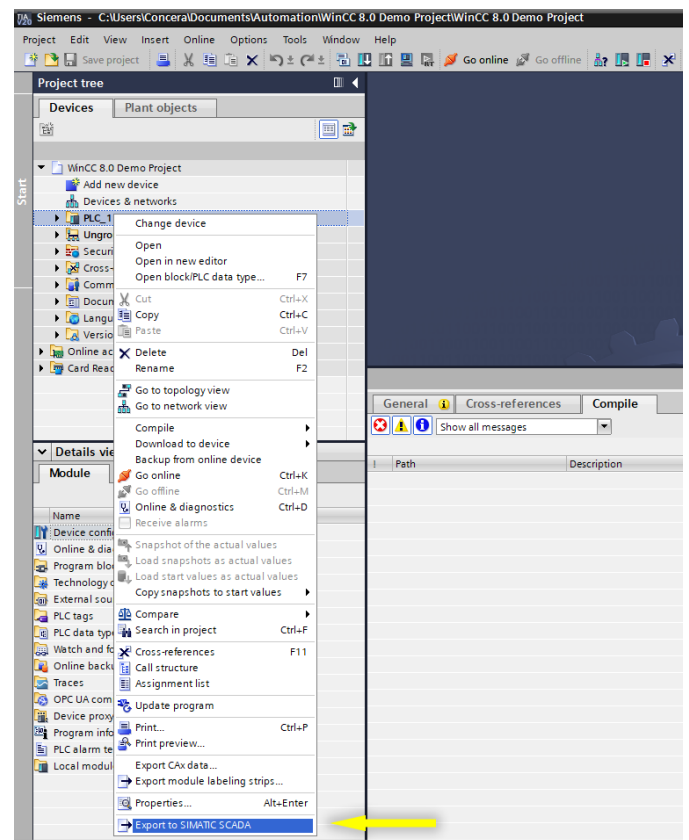
Exporting Certificate only.

Make sure the export tool for the used Tia Portal version is installed. Find the appropriate installer at

<https://support.industry.siemens.com/cs/document/109748955/simatic-scada-export-for-tia-portal?dti=0&lc=en-DE>

After installation an extra option is added to the context menu of the PLC. Click on "EExport to SIMATIC SCADA"

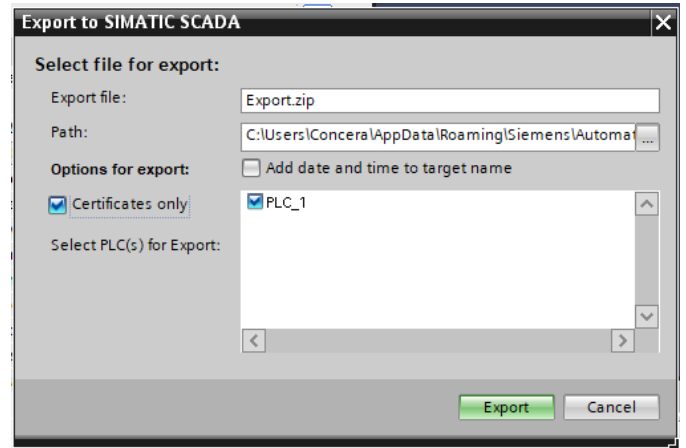
See chapter "Install SCADA Export Tool"



The exporter is able to export Certificates Only, but will (by default) export all connection data available. For the connection to WinCC 8.0 only the certificates are required so the box "Certificates Only" can be checked.

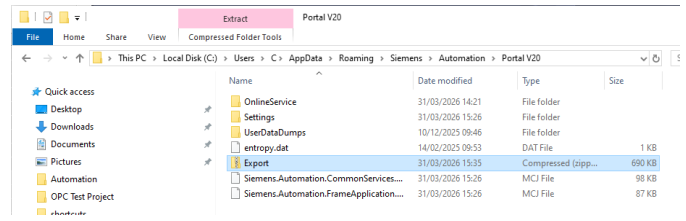
Note that by default the export-folder is not a commonly used folder, please change the folder to use a more common folder.

Click on "export".



The Export.zip that is created needs to be used to connect WinCC 8.0 to the PLC. Please send it to the WinCC developer or use it in your own WinCC project.

Please also supply the Username / Password that needs to be configured for the communication if there is one configured in the PLC for HMI purposes.



Setup the Connection in WinCC 8.x

Configure Connection

--	--

Install the certificate

--	--

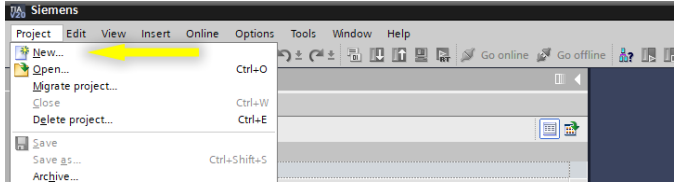
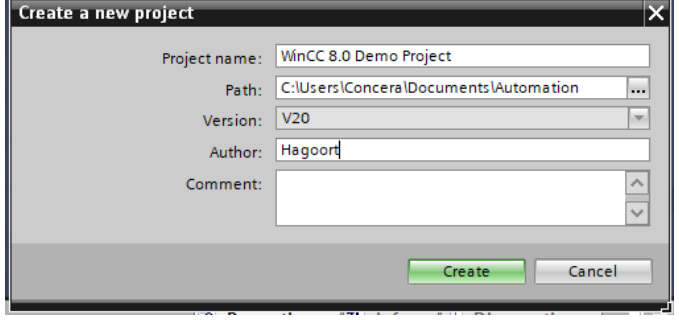
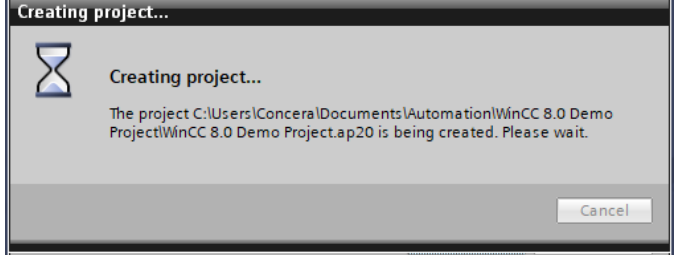
Configure Tags

<https://support.industry.siemens.com/forum/nl/en/posts/how-to-import-tag-from-s7-1500-to-wincc/318617>

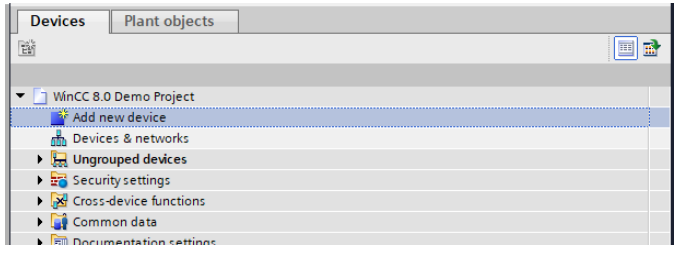
--	--

Configure security on the PLC

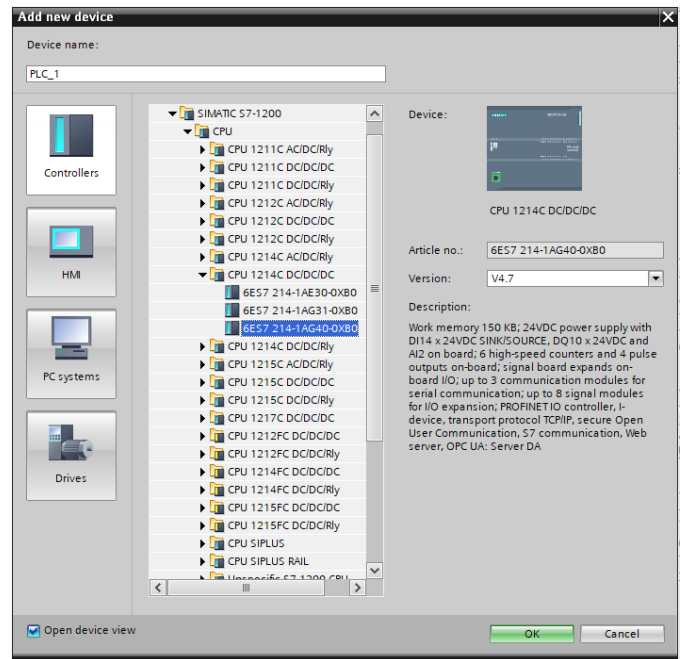
Creating a new project

<p>Create a new project from the Project menu in Tia Portal</p>	 A screenshot of the Siemens Tia Portal software interface. The 'Project' menu is open, and the 'New...' option is highlighted with a yellow arrow. Other menu items include 'Open...', 'Migrate project...', 'Close', 'Delete project...', 'Save', 'Save as...', and 'Archive...'.
<p>Name the project and click "Create"</p>	 A screenshot of the 'Create a new project' dialog box. The 'Project name' field contains 'WinCC 8.0 Demo Project'. The 'Path' field shows 'C:\Users\Conceral\Documents\Automation'. The 'Version' is set to 'V20'. The 'Author' field contains 'Hagoort'. There is an empty 'Comment' field. At the bottom, there are 'Create' and 'Cancel' buttons.
<p>Wait until the project is created.</p>	 A screenshot of a progress dialog box titled 'Creating project...'. It features an hourglass icon and the text: 'The project C:\Users\Conceral\Documents\Automation\WinCC 8.0 Demo Project\WinCC 8.0 Demo Project.ap20 is being created. Please wait.' A 'Cancel' button is located at the bottom right.

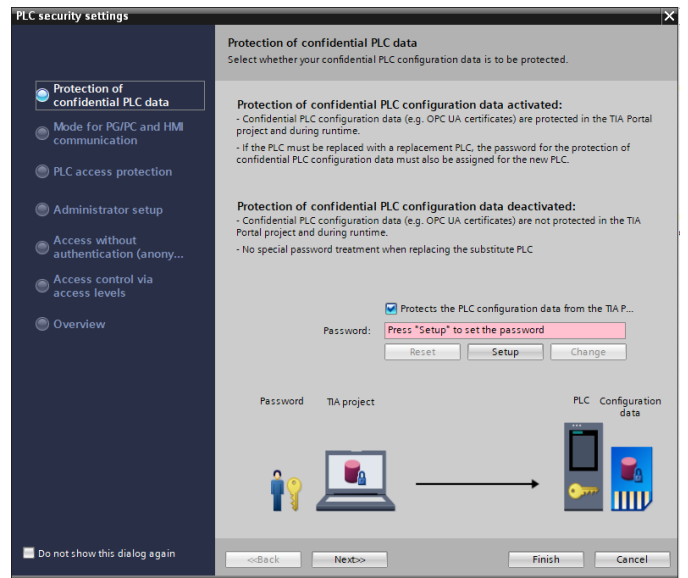
Add a new PLC project with secure communication

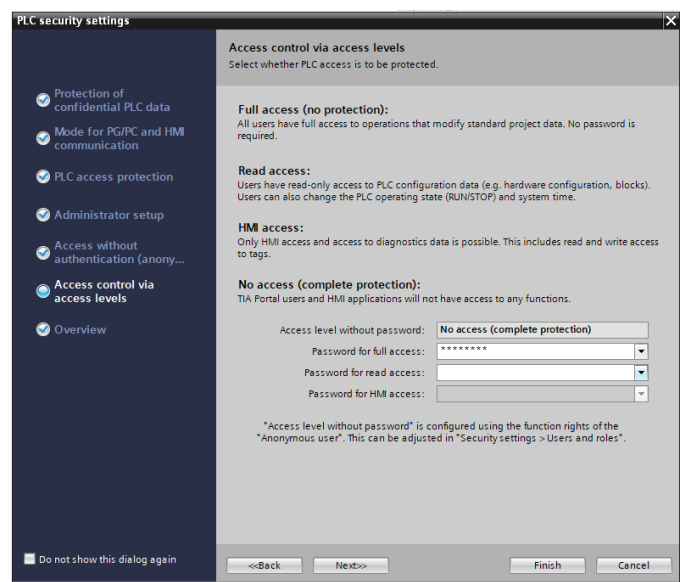
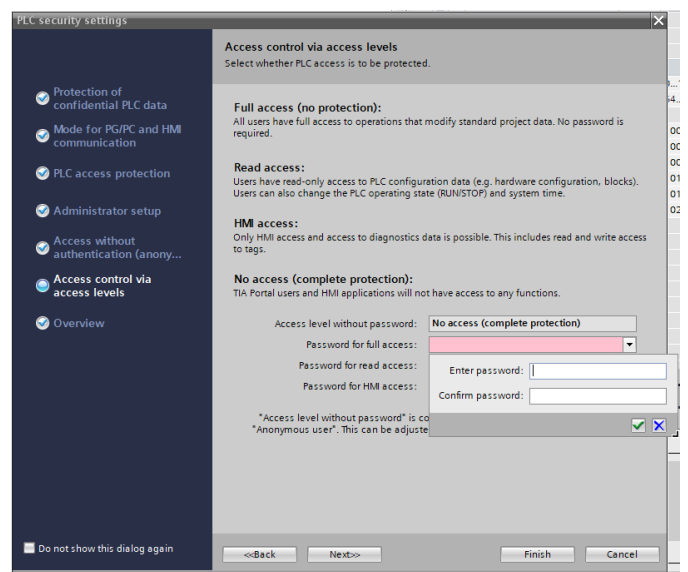
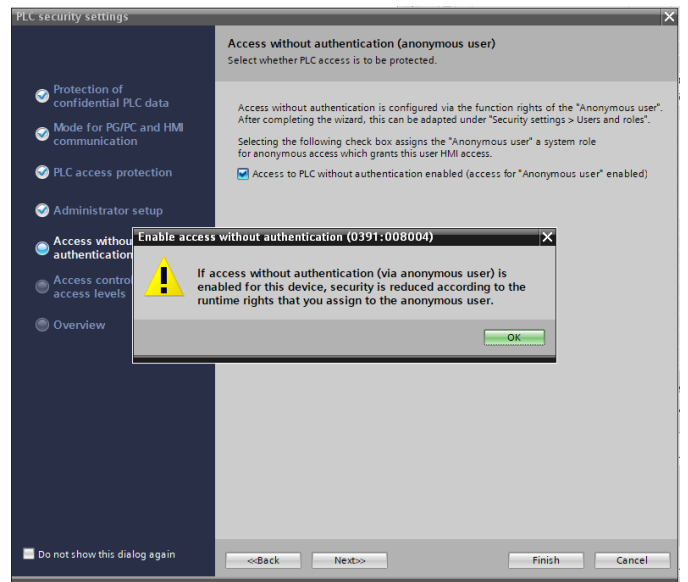
<p>Add a new PLC device.</p>	 A screenshot of the 'Devices' tree in Siemens Tia Portal. The tree is expanded to show the 'WinCC 8.0 Demo Project' folder. Underneath, the 'Add new device' option is highlighted. Other visible options include 'Devices & networks', 'Ungrouped devices', 'Security settings', 'Cross-device functions', 'Common data', and 'Documentation settings'.
------------------------------	---

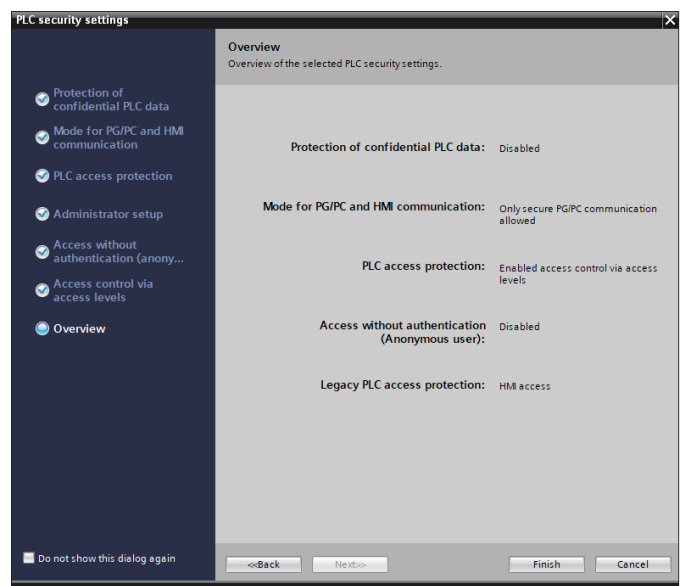
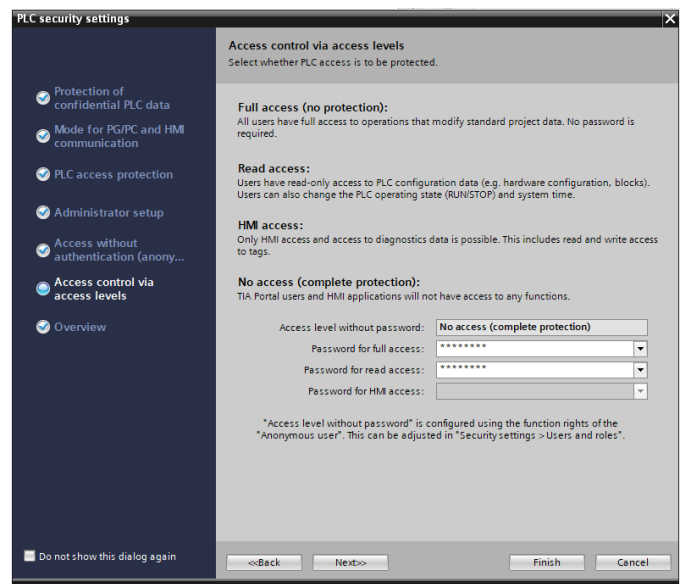
Select you PLC and click OK



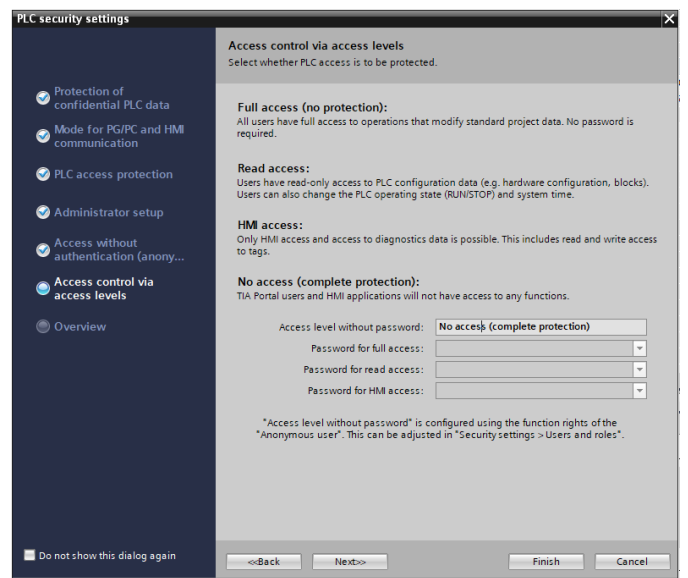
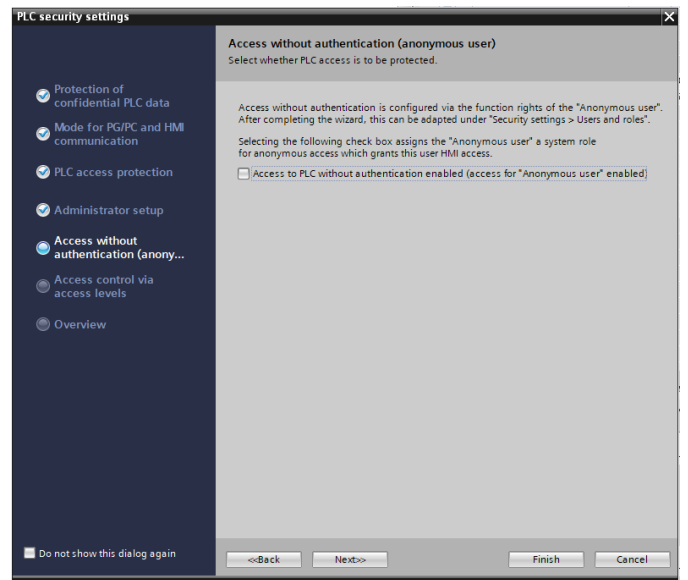
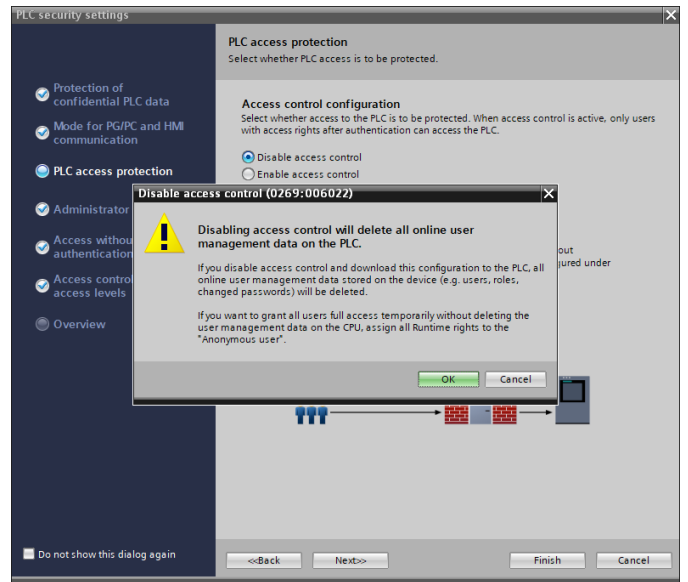
Enter a password, store it securely so it's not lost (because then you PLC project cannot be recovered / changed anymore). If securing the data is not mandatory, just uncheck the checkbox.





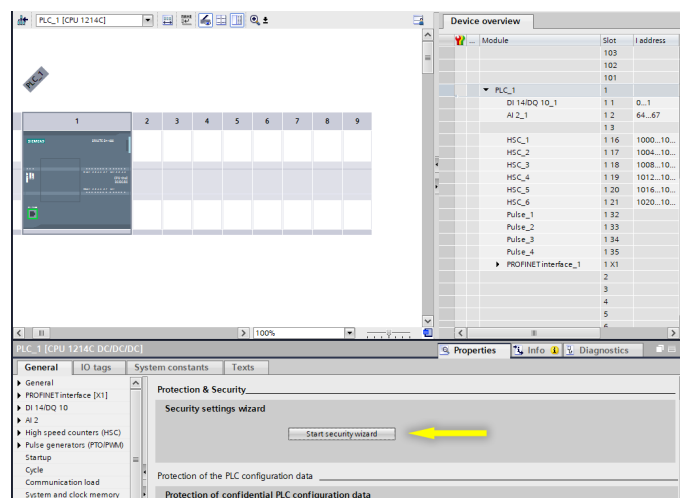


Add a new PLC project without secure communication



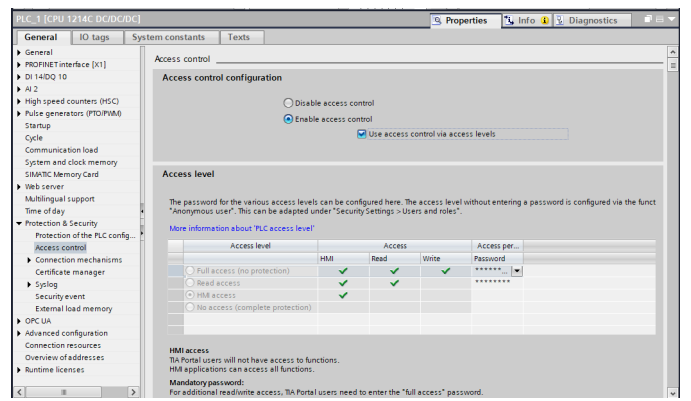
Changing the settings of an existing PLC.

To change security settings of the PLC just open the hardware configuration, click on the PLC and scroll to the "Protection and Security" section. Start the "Security Wizard" by clicking the corresponding button



Changing settings to use password for HMI access

To change the access password for HMI, just open "Protect & Security" -> "Access Control" in the properties of the PLC and change the password



Changing settings to use secure connections



Revision #4

Created 2026-04-02 08:46:07 UTC by ADMIN Concera

Updated 2026-04-02 09:10:15 UTC by ADMIN Concera